

**Motic®**

# PSM-1000

The New Motic PSM-1000 ProbeScope

For all your failure analysis, analytical, R&D and LCD repair needs,  
look to the new innovated microscope from Motic Instruments.

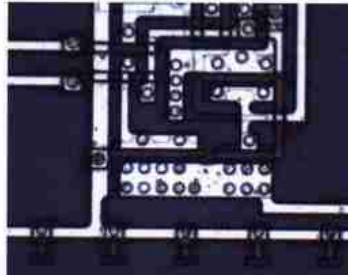
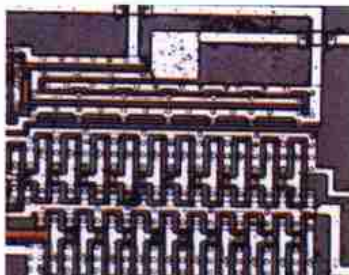


PSM-1000

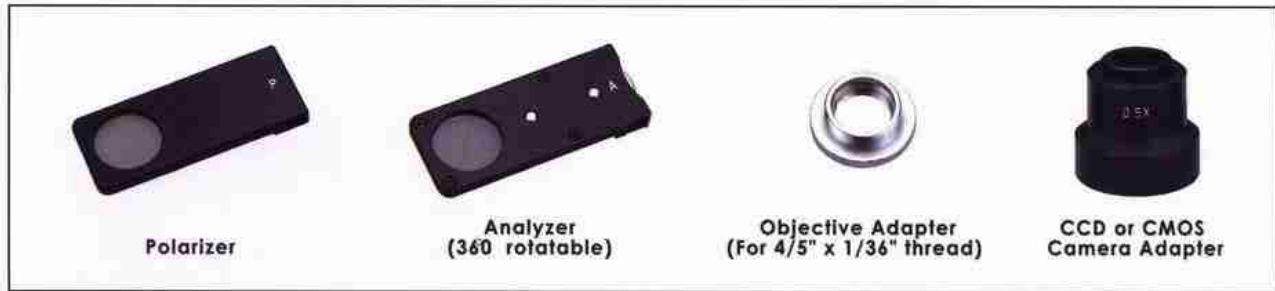
## Motic ALL-IN-ONE PSM-1000 ProbeScope easily meets the optical demands for a broad range of techniques.

Innovative Ergonomic design, leading edge optical systems and a host of unique advanced features make this Motic metallurgical/industrial instrument ideally suited to the needs of manufacturing and research & development in the fields of metallurgy, semiconductors and electronics.

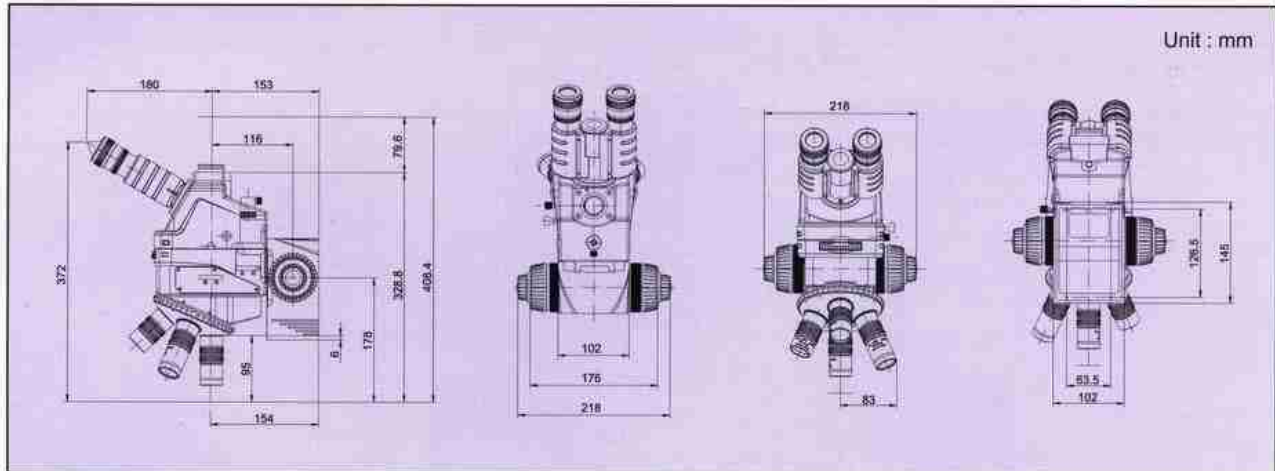
- The PSM-1000 provides a 3-lens turret with 1X, NIR tube lens, 1X/NUV tube lens, and 2X, visible. These lenses cover wavelengths from 355nm to 1064nm and are designed around the New Wave Research Lasers. A laser safety pin is provided. Laser Safety filter to be provided by the laser manufacturer
- The beam-splitter can be easily moved out of the field of view to enhance laser performance.
- The focus block can be rotated for better positioning and is rated for a 100lb load.
- The trinocular head can be easily removed by loosening one thumbscrew.
- Quadruple, forward facing nosepiece is spring loaded and, with adjustments located on the side, the turret can be easily adjusted for parcentration (tools included). The turret is placed on a dovetail mount for easy access and removal. The turret comes with colored stickers to indicate the position of objectives.
- Coaxial coarse / fine focus knob. Fine: 0.1mm / rotation with scale both sides.
- The body incorporates polarizing filter slots for easy adaptation.
- The diopter setting can be conveniently changed with one hand as the Widefield High Eyepoint eyepieces WF10X / 24mm are set into a slot.
- Fixed 50/50 or Switchable 0/100 for laser operation.
- The aperture diaphragm adjustment is easily made using the adjustment ring located on the right side of the body.
- The PSM-1000 is designed for Long Working Distance objectives. Motic Instruments has designed a set of high quality objectives for the PSM-1000 ProbeScope with the following magnifications ELWD 2x, 5x, 10x, 20x, 50x, 100x and ULWD 50x, 100x objectives. Also our Unique Parfocality Objectives. For further information please review the Motic Objective brochure.
- Five Years parts and labor



## OPTIONAL ACCESSORIES



## PSM-1000 DIMENSIONS



## SPECIFICATION OF PROBESCOPE PSM-1000

Eyepiece		10X/24 Wide field High Eyepoint eyepiece with eyeguard, 1 pair
Objective		Plan APO Series, Infinity Objective Lens (f=200/∞)
Tube Lens		2X (for visible) /1X (for visible and NIR) /1X (for visible and NUV), turret changover system
Optical Tube Type		Available from NIR~NUV (1064nm to 355nm)
Trinocular Tube	Binocular Interpupillary Distance Optical Path	Siedentopf infinity, Erect image 55~75mm Fixed 50/50 simultaneous observation or switchable 0/100 optical path for laser operation.
Focus Block	Stroke Operation Mountable Weight	50mm, travel range Coaxial system, Coarse 4mm per rotation/Fine 0.1mm per rotation 45Kg
Nosepiece		Quadruple, forward facing nosepiece, parcenterable for each objective mount
Illumination System		Bright field incident illuminator with aperture stop ( Koehler illumination )
Weight (main body)		7.4Kg
Accessory		Color sticker, centering keys
Optional		Adapter for WJ4/5" x 1/26" Objective, polarizer unit and analyzer unit, 1X tube lens (for visible), ULWD Plan APO objectives, parfocal Plan APO objectives

## PARTS LIST OF PROBESCOPE PSM-1000

Name	Part No.	Qty.	Note		
Trinocular Head	SW0199BD	1	●		
Body	SW0199BE	1	●		
Quadruple Nosepiece	SW011715	1	●		
Focus Block	SW0199BG	1	●		
WF10X/24 Eyepieces	SG02S0142	2	●		
Binocular Tube	SP100243	1	●		
Analyzer	SW01991Z	1	○		
Polarizer	SW01992B	1	○		
Camera Adapter	0.5X (For 1/2" CCD)	SP100363	1	C-mount can be attached	○
	0.4X (For 2/3" CCD)	SP100365	1	C-mount can be attached	○
	0.3X (For 1/3" CCD)	SP100367	1	C-mount cannot be attached	○
Color Sticker	SW022092	1	●		
Objective Adapter	SW011840	1	For 4/5"x1/36" Objectives	○	
Centering Key	SW0199BH	2	●		
Eyeguards	SW022164	2	●		

Objectives refer to objective catalogue. ○ Optional ● Standard

Note: Motic Instruments assumes no responsibility whatsoever for the performance and/or safety of the laser system used with the Motic PSM-1000 microscope. See Laser manufacturer for safety filters and proper operation.

Offered by:

***BRIDGE Technology***

PO Box 9275

Chandler Heights, AZ 85227

Tel: 480-988-2256

Fax: 480-452-0172

Email: [larry@bridgetec.com](mailto:larry@bridgetec.com)

<http://www.bridgetec.com>