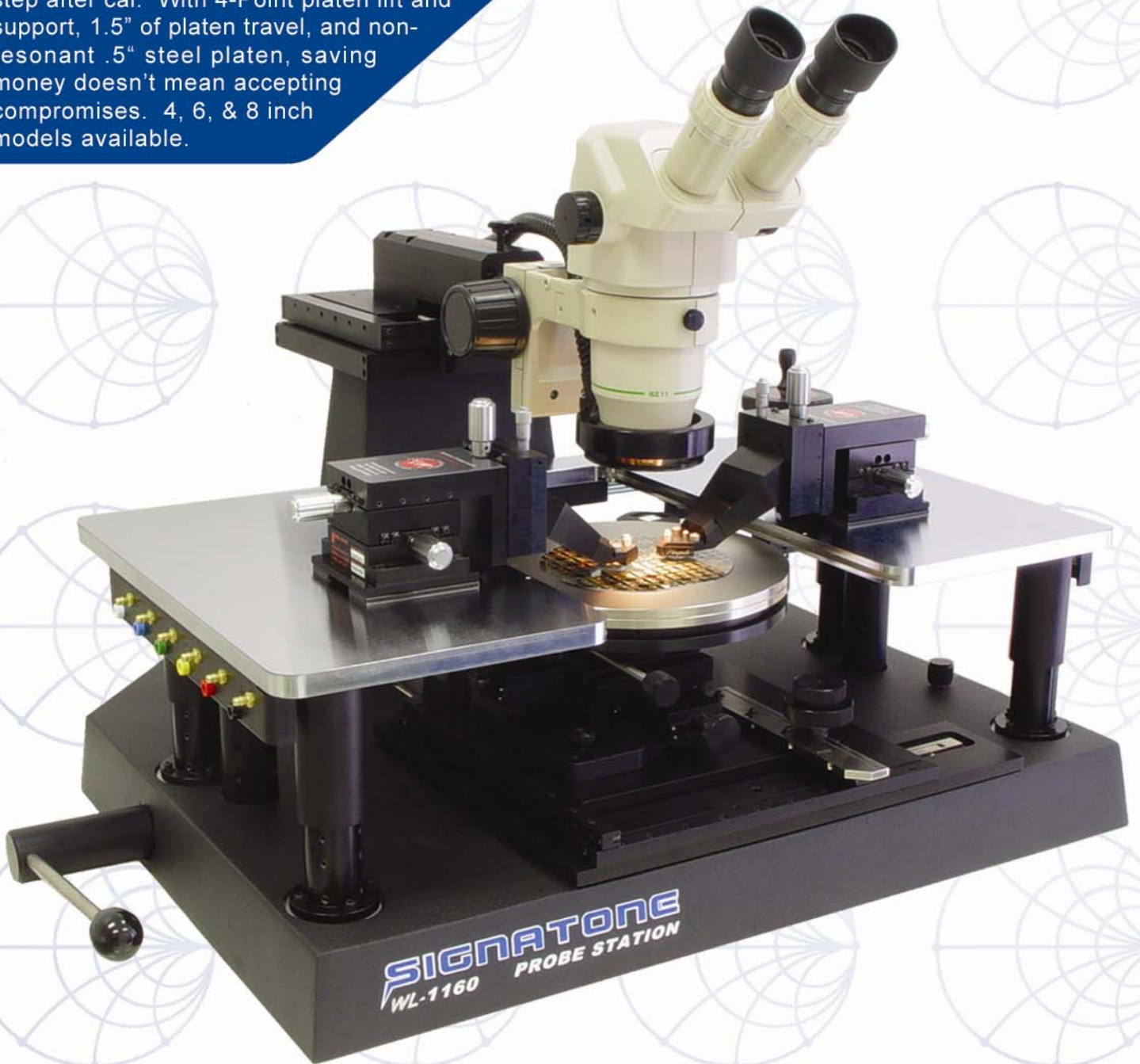


WAVELINK-1160



The Value Leader In Manual RF Probing

The WL-1160 is ideally suited for Wireless and Bluetooth applications, and like all WAVELINK probe stations incorporates independent wafer and calibration chucks, eliminating the tedious realignment step after cal. With 4-Point platen lift and support, 1.5" of platen travel, and non-resonant .5" steel platen, saving money doesn't mean accepting compromises. 4, 6, & 8 inch models available.



PERFORMANCE, QUALITY, VALUE

SIGNATONE®

Advanced Microprobing Solutions Since 1968

WAVELINK-1160



Features & Benefits

The WL-1160 RF/Microwave probe station has been designed for high-frequency, high-power, and millimeter wave applications where non-resonant operation is critical.

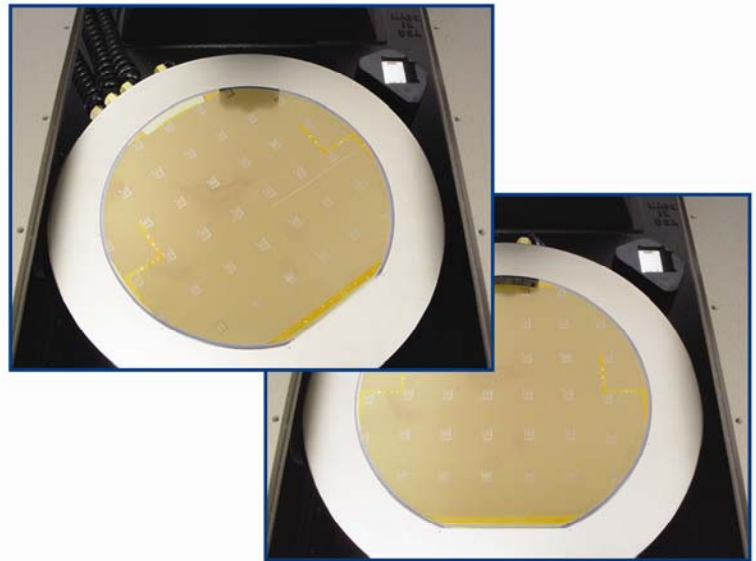
The WL-1160 is available with 150mm and 200mm chucks for holding various devices. An independent calibration substrate chuck, located adjacent to the DUT improves calibration time, and accessibility, while the independent theta for the cal and main chucks eliminates the need for realignment of the DUT wafer after calibration..

The WL-1160 includes a 4" x 4" microscope stage for optimal viewing of the test area. The WL-1160 supports most StereoZoom and high-powered microscopes on the market today.

The WL-160 uses the same stable platform of its sister product, the S-1160 multipurpose probe station. The S-1160 and WL-1160 share the same versatility that allows use of probe cards, magnetic, vacuum, and bolt-down base micropositioners, hot chucks, light-tight enclosures and many more essential accessories that give users the tools they need.

Features:

- 150mm & 200mm manual X-Y motion control
- 100mm x 100mm microscope stage control
- Separate contact/separate and platen height control
- Up to 30mm Z motion control of platen
- Holds up to 4 S-96MW microwave micropositioners
- Vacuum and DC manifolds standard



Separate theta eliminates the wafer realignment step after calibration

SPECIFICATIONS

Width.....	27 inches
Depth	22 inches
Height (with microscope) ..	19.5-22 inches
Shipping Weight.....	125 pounds
Vacuum Chuck	6" or 8" diameter - supports single die through 8" wafers
X-Y Stage Resolution.....	X motion @ 1.125" per knob revolution Y motion @ 1.6" per knob revolution
Coarse Platen Lift	3/8" linear with continuous friction stop
Fine Platen Lift.....	1 1/3" @ .025" per knob revolution
X-Y Microscope Stage	4" X motion @ .1" per knob revolution 4" Y motion @ .1" per knob revolution
Facilities Required.....	Vacuum 20" Hg @ .1 CFM Power for Microscope, 120V/60 Hz AC, 20 Watts

CONFIGURATIONS

ORDERING INFORMATION - Select the WL-1160 best suited for your application

WL-1160 [] - []

Microscope Mount Type

A = High-Powered Optics Mount
B = StereoZoom Optics Mount
C = StereoZoom Boom Stand

Chuck & Stage Range

6 = 6 inch (150mm)
8 = 8 inch (200mm)

SIGNATONE

393-J Tomkins Court, Gilroy CA 95020

Phone: 408-848-2851 Fax: 408-848-5763

E-Mail: sales@signatone.com WWW: <http://www.signatone.com>